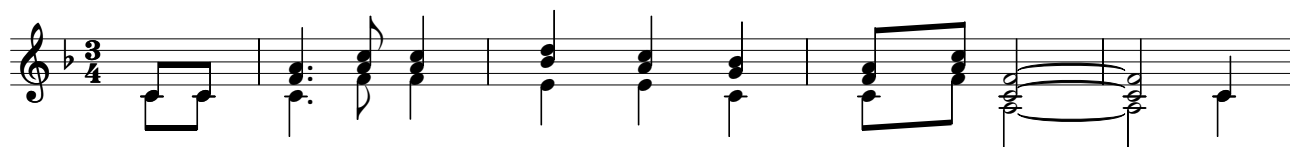
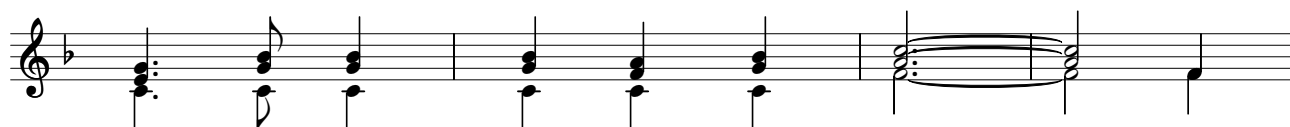


In der Maltinga Wand

Worte: Otto Büntner
Weise: Sepp Ortner
aus 6. Tiroler Singwoche 1981



In da Mal - tin - ga Wand hängt a Schlei - a - le, a
A Ja - ga is fer - tn zur Hüt - tu - tür, zur
Wann i in der Mal - ting drein sum - man tua, ja



Schlei - a - le, weiss wai da Schnea; da
Hüt - tu - tür au - fa kömm' liegn, hiaz
sum - man tua obm ü - ban Land, geah



Herr - gott hats gmacht aus an Was - sa - le, an
wer i mei Löb - tag koa Schlei - a - le, mei
is im - mar wohl uma zan Schlei - a - le, zan



Was - sa - le drobm auf der Heah.
Löb - tag koa Schlei - a - le kriagn Ha - dl di ri, hui
Schlei - a - le drin in da Wand.



ri - tu - i ja, an Was - sa - le drobm auf der Heah.
mei Löb - tag koa Schlei - a - le kriagn.
zan Schlei - a - le drin in da Wand.